



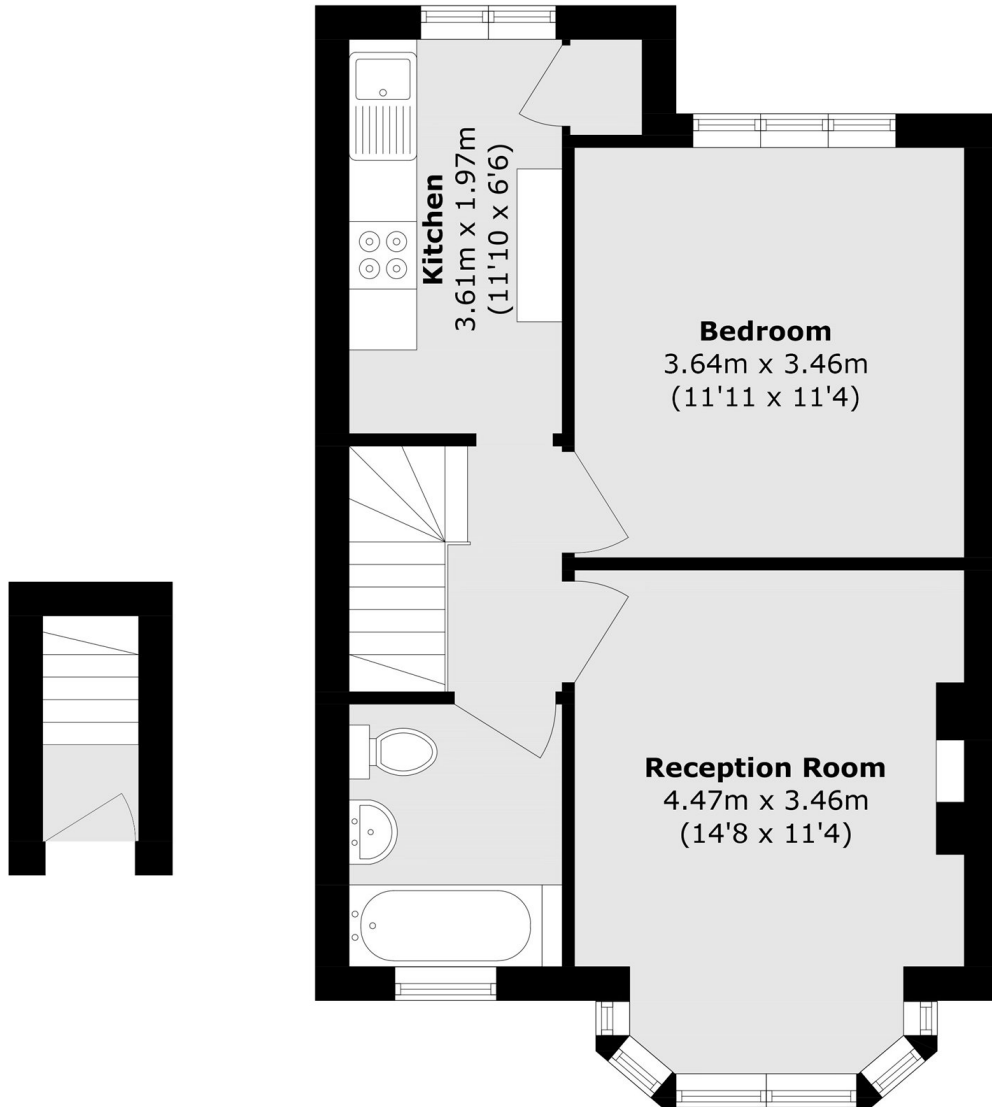
Torrington Drive, HA2

£260,000

A well presented and spacious one bedroom maisonette with its own private entrance and steps leading to the main accommodation, comprising a bright reception room, separate kitchen, generous double bedroom, and a family bathroom.

Located in South Harrow, the area offers a range of everyday amenities including local shops, cafés, and restaurants, as well as nearby supermarkets for convenience. South Harrow Underground Station is within easy reach, providing direct access into Central London.

- First Floor Maisonette • Double Bedroom • Large Reception Room •
- Private Entrance • Driveway For Two Cars • Excellent Transport Links •



Ground Floor

First Floor

Total area (approx.): 46.0 sq. m (495.1 sq. ft)

David Conway
020 8422 5222

Energy Rating: We aim to make our particulars both accurate and reliable. However they are not guaranteed; nor do they form part of an offer or contract. If you require clarification on any points then please contact us, especially if you're travelling some distance to view. Please note that appliances and heating systems have not been tested and therefore no warranties can be given as to their good working order.